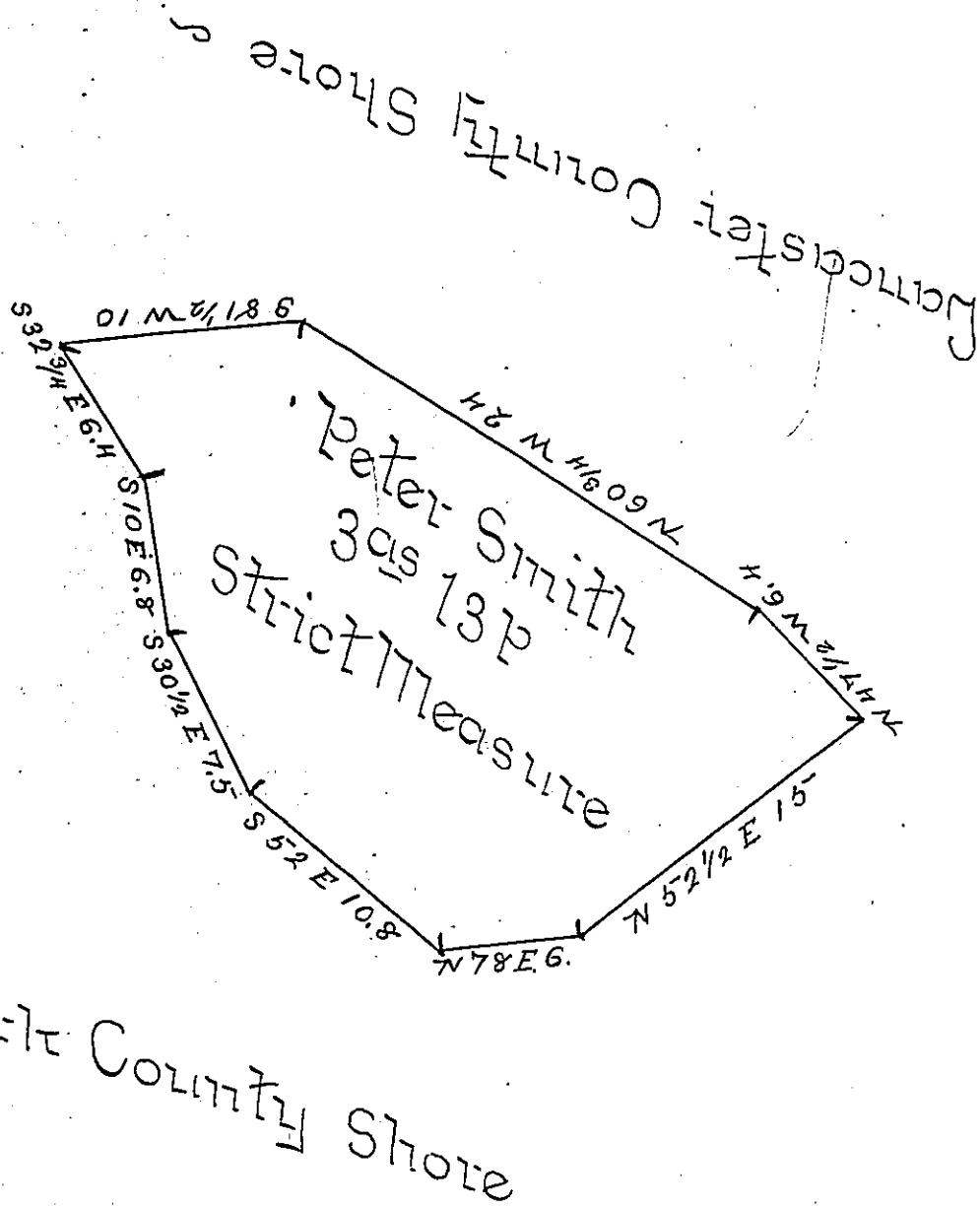


W



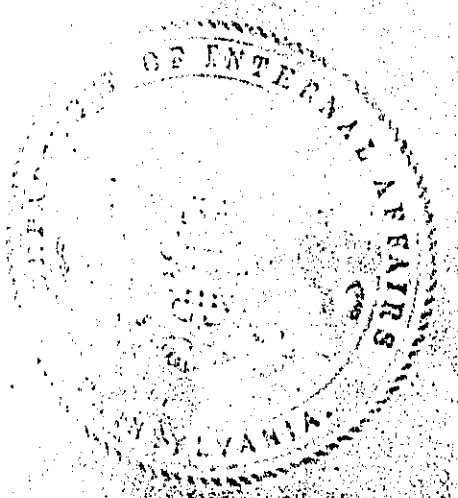
Draught of Mike's Island situate in the River Susquehanna, in Martick Township Lancaster County opposite the land of Hance Ringland and Company on the York Shore about fifteen perches East of S^d Land about eight perches West of M. Calls Island and about Ten perches South of Gordons Island - Containing 3^a 13 perches Strict Measure - Surveyed in Pursuance of a Warrant granted to Peter Smith Dated the 7th day of December A.D. 1836

P Hugh Bong D.S.

To John Taylor Esq^r }
Surveyor General. }

Warrant dated 8th March 1837.

IN TESTIMONY that the above is a copy of the original remaining on file in the Department of Internal Affairs of Pennsylvania, made conformably to an Act of Assembly approved the 16th day of February, 1833, I have hereunto set my Hand and caused the Seal of said Department to be affixed at Harrisburg, this fourth day of July 1899.



James W. Pitta
Secretary of Internal Affairs.